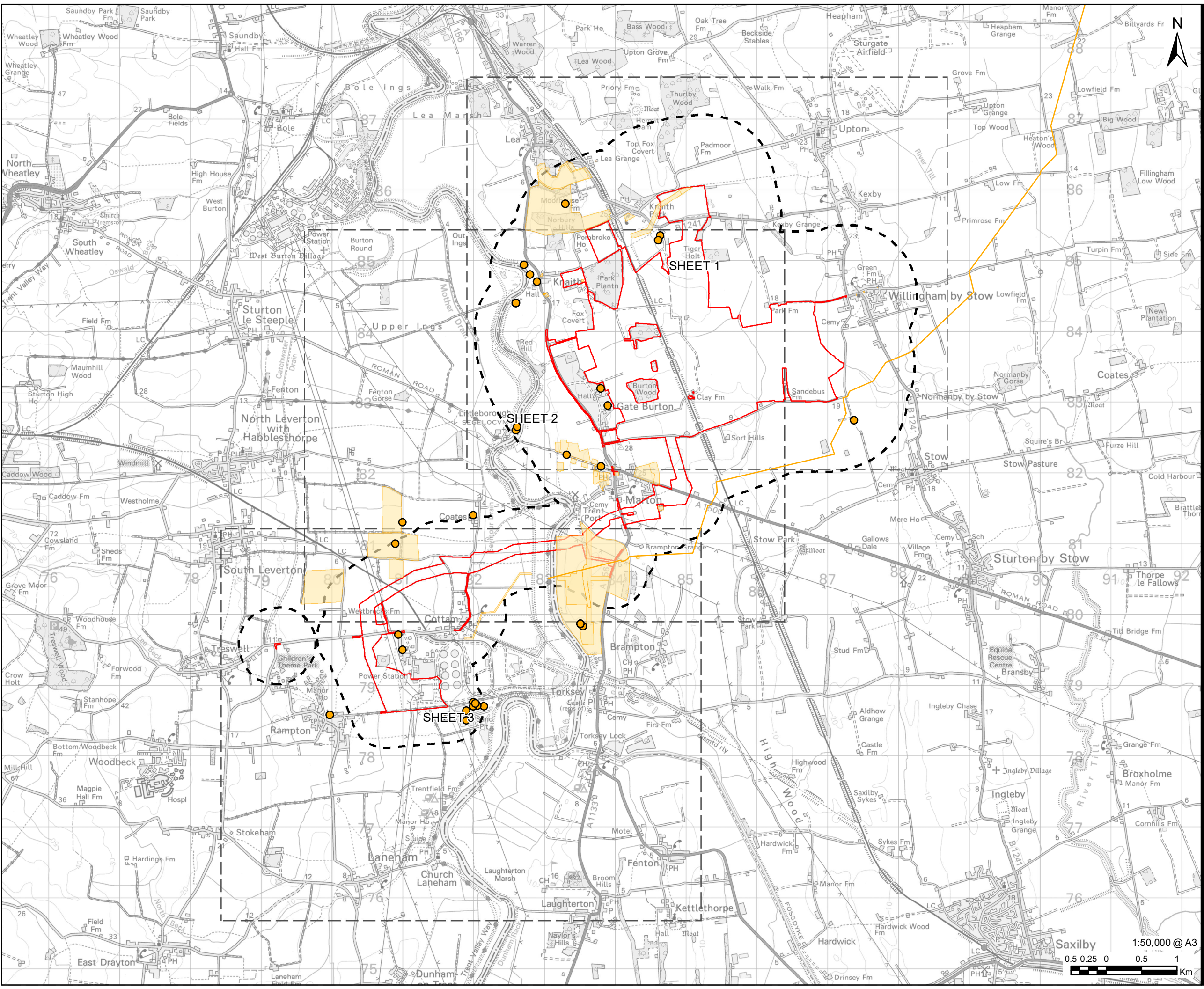



Revision: 01 Drawn: VC Checked: JW Approved: WB Date: 2022-11-01
Filename: lna.aecomnet.com\ms\ENEA\roydon\UKCRD1\Legacy\UKCRD1\FP001-V1E\projects\general\GIS\Projects\Gate Burton Energy Park\Map2_Environmental Statement\Chapter 07 - Heritage\HER_ES_Figure7_3_ArchaeologicalEvents.mxd



AECOM

PROJECT
Gate Burton Energy Park

CLIENT

Gate Burton
ENERGY PARK

CONSULTANT
AECOM Limited
Sunley House
4 Bedford Park
Surrey, CR0 2AP, UK
www.aecom.com

LEGEND
Order Limits
Study Area
Event

NOTES
© Crown copyright and database rights
2022. Ordnance Survey 0100031673. HER
Data obtained from Lincolnshire County
Council HER and Nottinghamshire County
Council 2022.

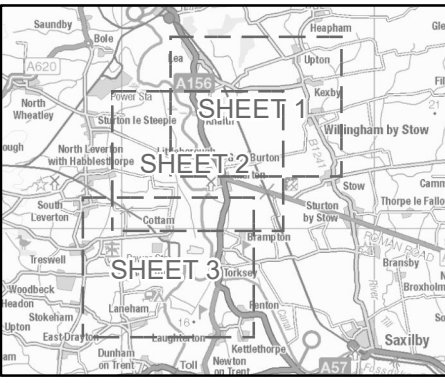
ISSUE PURPOSE
Environmental Statement

PROJECT NUMBER
60664324

FIGURE TITLE
Previous Archaeological Investigations
Overview

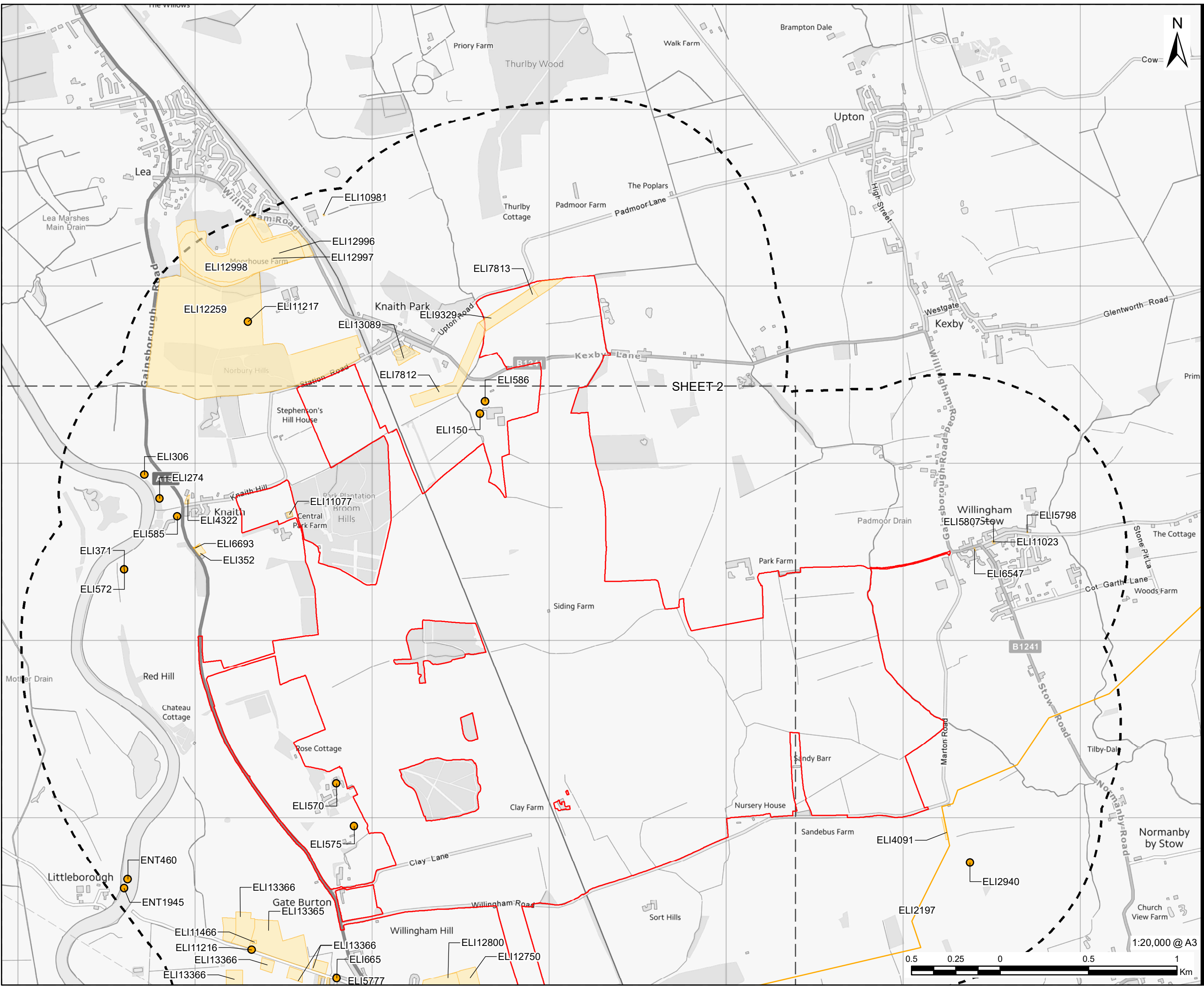
FIGURE NUMBER
Figure 7-3

Scale: 1:50,000 @ A3
0 0.25 0.5 1 Km



This drawing has been prepared for the use of AECOM's client. It may not be used, modified, reproduced or relied upon by third parties, except as agreed by AECOM or as required by AECOM or as required by law. AECOM accepts no responsibility, and denies any liability whatsoever, to any party that uses or relies on this drawing without AECOM's express written consent. Do not scale this document. All measurements must be obtained from the stated dimensions.

Revision: 01 Drawn: VC Checked: JW Approved: WB Date: 2022-11-01
Filename: \\na.aecom.com\ms\ENEA\roydon\UKGRD1\Legacy\UKCRD1\FP001\VIIE\projects\general\GIS\Projects\Gate Burton Energy Park\02_Maps\Environmental Statement\Chapter 07 - Heritage\HER_ES_Figure7_3_ArchaeologicalEvents.mxd



AECOM
PROJECT
Gate Burton Energy Park

CLIENT
Gate Burton ENERGY PARK

CONSULTANT
AECOM Limited
Sunley House
4 Bedford Park
Surrey, CR0 2AP, UK
www.aecom.com

LEGEND
Order Limits
Study Area
Event

NOTES
© Crown copyright and database rights 2022. Ordnance Survey 0100031673. HER Data obtained from Lincolnshire County Council HER and Nottinghamshire County Council 2022.

ISSUE PURPOSE
Environmental Statement

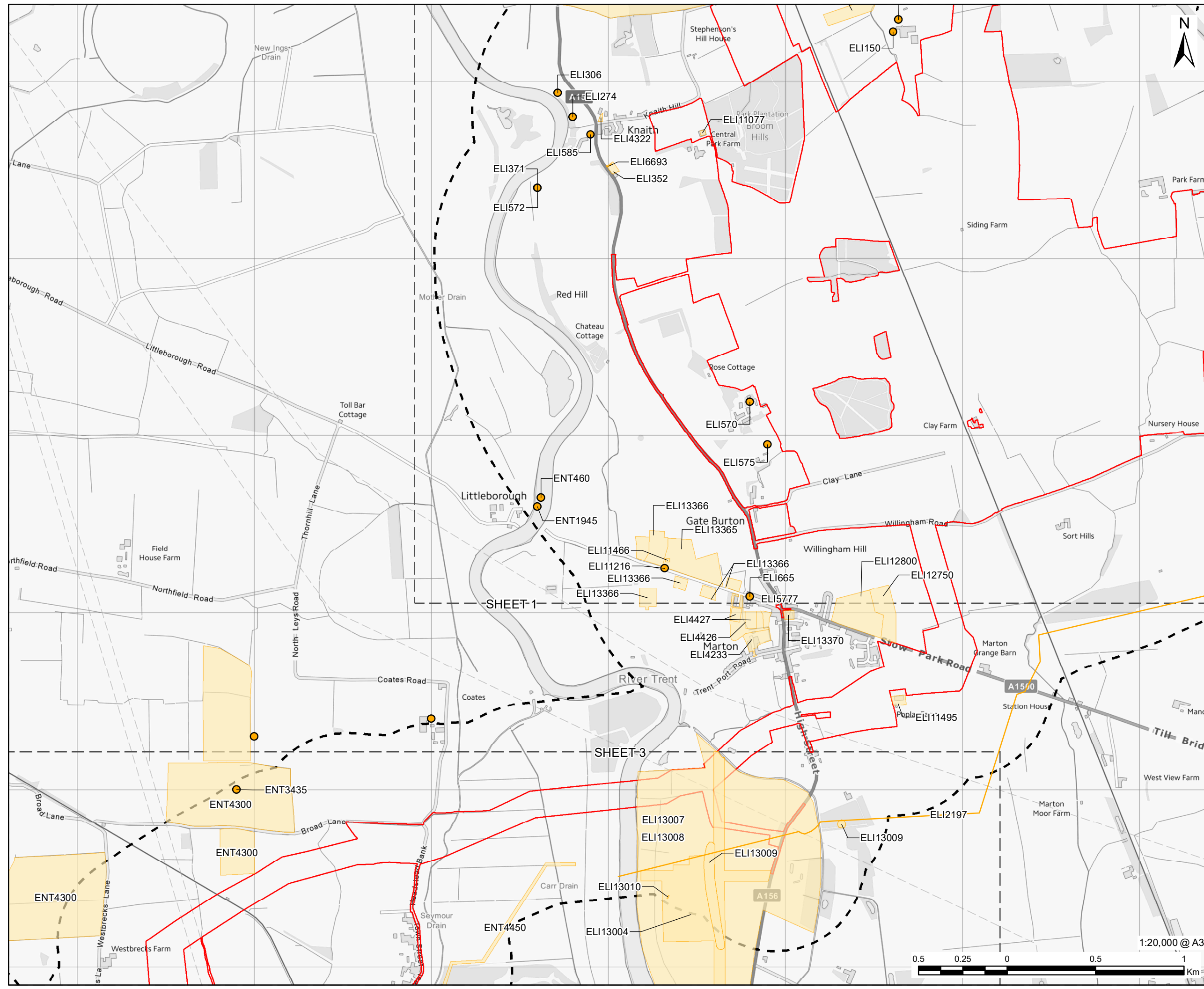
PROJECT NUMBER
60664324

FIGURE TITLE
Previous Archaeological Investigations SHEET 1

FIGURE NUMBER
Figure 7-3

This drawing has been prepared for the use of AECOM's client. It may not be used, modified, reproduced or relied upon by third parties, except as agreed by AECOM or as required by law. AECOM accepts no responsibility, and denies any liability whatsoever, to any party that uses or relies on this drawing without AECOM's express written consent. Do not scale this document. All measurements must be obtained from the stated dimensions.

Revision: 01 Drawn: VC Checked: JW Approved: WB Date: 2022-11-01
Filename: \\na.aecomnet.com\ms\EMEA\roydon\UKGRD1\Legacy\UKCRD1\FP001-V11E\projects\general\GIS\Projects\Gate Burton Energy Park\Map2\Environmental Statement\Chapter 07 - Heritage\HER_ES_Figure7_3_ArchaeologicalEvents.mxd



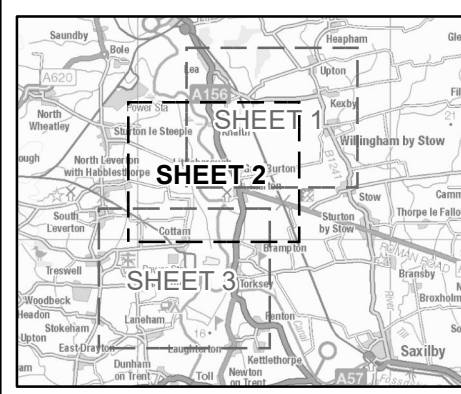
PROJECT
Gate Burton Energy Park

CLIENT

Gate Burton
ENERGY PARK

CONSULTANT
AECOM Limited
Sunley House
4 Bedford Park
Surrey, CR0 2AP, UK
www.aecom.com

LEGEND
Order Limits (Red outline)
Study Area (Dashed line)
Event (Yellow circle)



NOTES
© Crown copyright and database rights
2022. Ordnance Survey 0100031673. HER
Data obtained from Lincolnshire County
Council HER and Nottinghamshire County
Council 2022.

ISSUE PURPOSE
Environmental Statement

PROJECT NUMBER
60664324

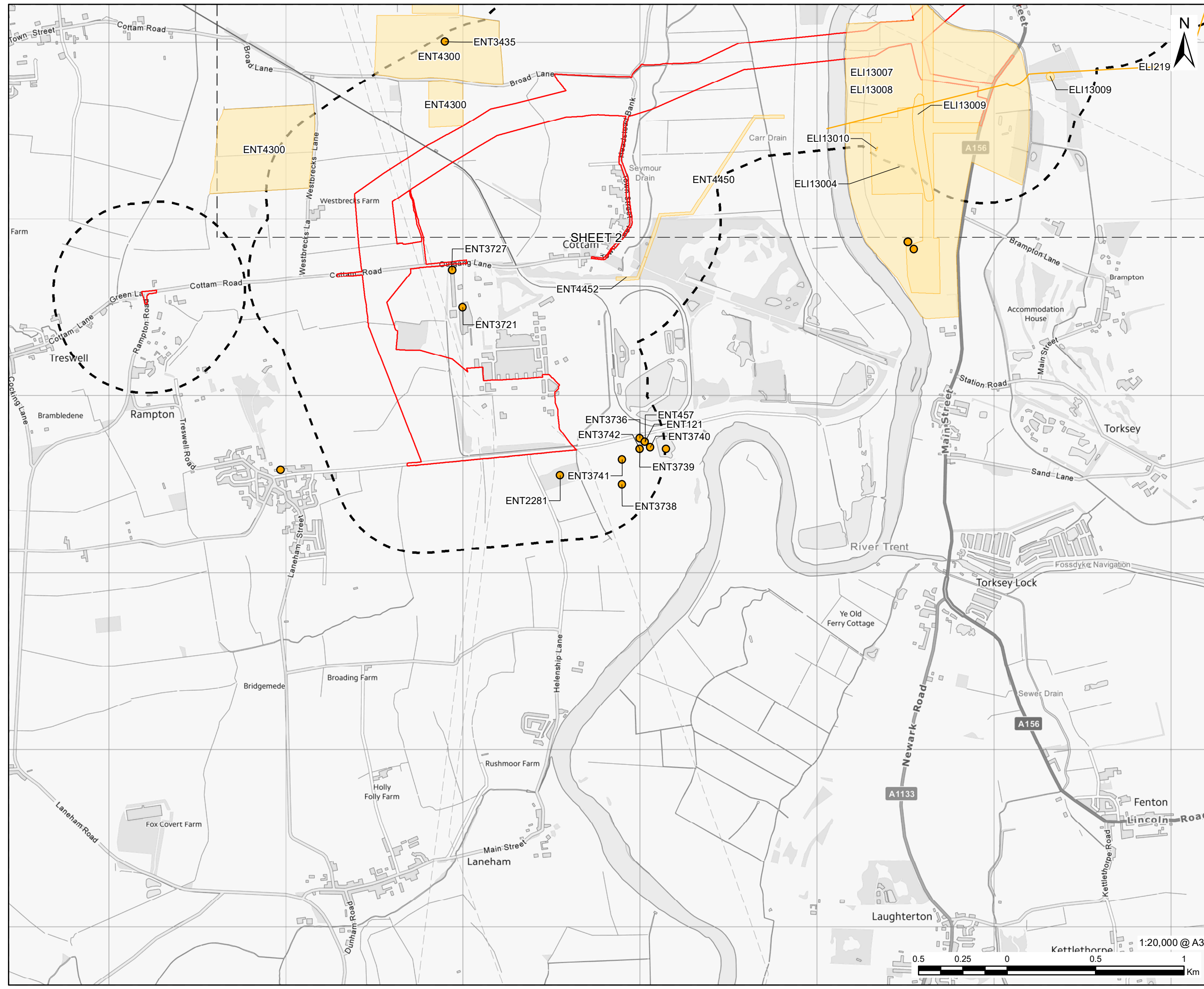
FIGURE TITLE
Previous Archaeological Investigations
SHEET 2

FIGURE NUMBER
Figure 7-3



This drawing has been prepared for the use of AECOM's client. It may not be used, modified, reproduced or relied upon by third parties, except as agreed by AECOM or as required by law. AECOM accepts no responsibility, and denies any liability whatsoever, to any party that uses or relies on this drawing without AECOM's express written consent. Do not scale this document. All measurements must be obtained from the stated dimensions.

Revision: 01 Drawn: VC Checked: JW Approved: WB Date: 2022-11-01
Filename: lna.aecomnet.com\lms\EMEA\croymdon\UKGRD1\Legacy\UKCRD1\FP001\1\1\1\projects\general\GIS\Projects\Gate Burton Energy Park\02_Maps\Environmental Statement\Chapter 07 - Heritage\HER_ES_Figure7_3_ArchaeologicalEvents.mxd



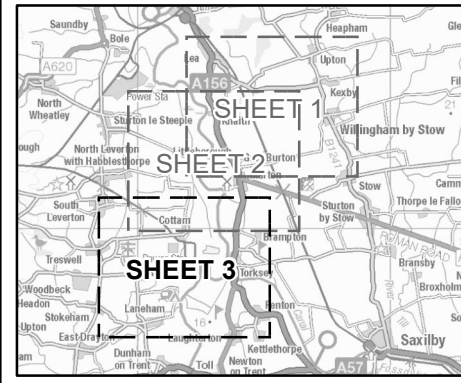
PROJECT
Gate Burton Energy Park

CLIENT

Gate Burton
ENERGY PARK

CONSULTANT
AECOM Limited
Sunley House
4 Bedford Park
Surrey, CR0 2AP, UK
www.aecom.com

LEGEND
Order Limits
Study Area
Event



NOTES
© Crown copyright and database rights
2022. Ordnance Survey 0100031673. HER
Data obtained from Lincolnshire County
Council HER and Nottinghamshire County
Council 2022.

ISSUE PURPOSE
Environmental Statement

PROJECT NUMBER
60664324

FIGURE TITLE
Previous Archaeological Investigations
SHEET 3

FIGURE NUMBER
Figure 7-3

This drawing has been prepared for the use of AECOM's client. It may not be used, modified, reproduced or relied upon by third parties, except as agreed by AECOM or as required by AECOM or as required by law. AECOM accepts no responsibility, and denies any liability whatsoever, to any party that uses or relies on this drawing without AECOM's express written consent. Do not scale this document. All measurements must be obtained from the stated dimensions.